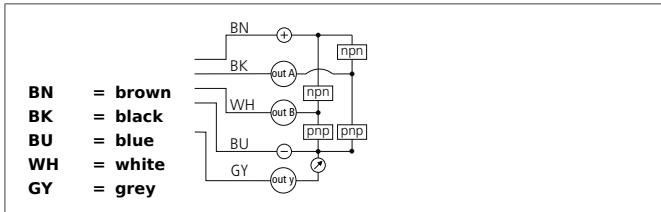


NST 60 M 45Y-UG8-B5

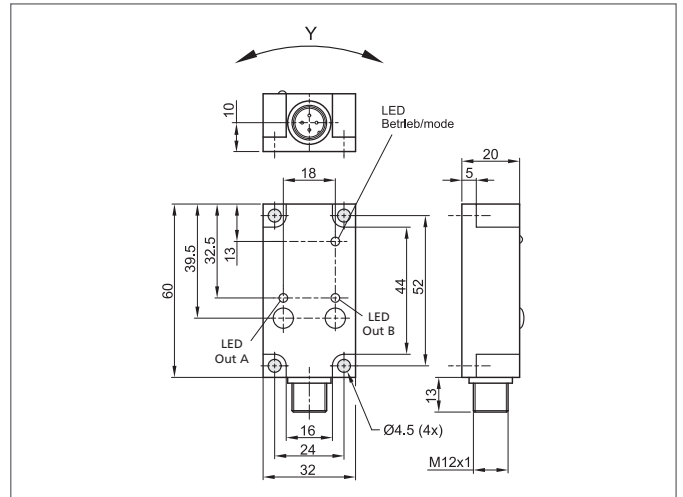
Inclination Sensor

- Measuring range $\pm 45^\circ$
- Two switching outputs
- Analog output 0 ... 10 V DC
- Robust metal casing



Safety instructions

The Instruments are not to be used for safety applications, in particular applications in which safety of persons depends on proper operation of the instruments.
 These instruments shall exclusively be used by qualified personnel.



TECHNICAL INFORMATION (typ.)	+20°C, 24V DC
Maximum rating	polarity-safe
Service voltage	12 ... 30 V DC
Internal power consumption	< 30 mA
Detection range	+/-45°
Resolution	0,1°
Analog output	0 ... 10 V, min. 100kΩ, linearised
Output signal	5 V at 0°
Sensitivity	+/- 3%
Shock-/vibration load	30 g
Display	LED: green - operation, yellow - output
Response time	< 1 s / < 100 ms switchable
Reproducibility	0,2°
Ambient temperature	-25 ... +70 °C
Temperature drift	0,05 °/K
Protection class	IP 67
Casing material	Aluminium anodized
Connection	Connector, M12